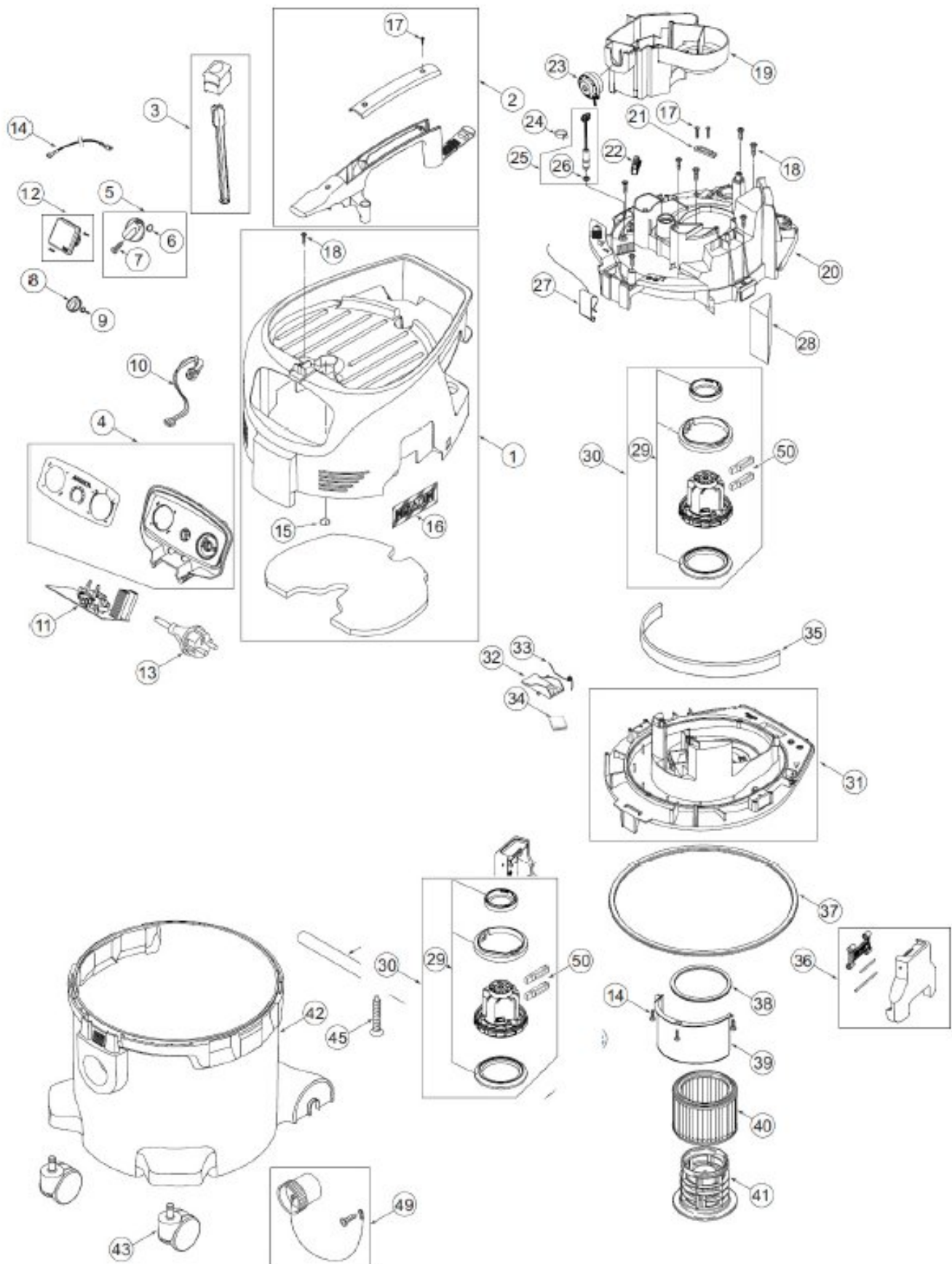


# Exploded view for Dust Extractor 915M

Updated 27.9.2013



| Pos | Code              | QTY (pcs.) | Description                            | Model |
|-----|-------------------|------------|--|-------|
| 1   | 8999701111        | 1          | COVER                                  |       |
| 2   | 8999710111        | 1          | HANDLE                                 |       |
| 3   | 8999700311        | 1          | FILTER DEDUSTER                        |       |
| 4   |                   | 1          | SWITCHBOARD for M-class                | M     |
| 5   | 8999603611        | 1          | ROTARY KNOB                            |       |
| 6   | 8999603711        | 1          | O-RING                                 |       |
| 7   |                   | 1          | SCREW                                  |       |
| 8   |                   | 1          | TURNING KNOB                           | M     |
| 9   |                   | 1          | O-RING                                 | M     |
| 10  |                   | 1          | ELECTRONIC POTENTIOMETER               | M     |
| 11  | 8999751111        | 1          | AUTO ON-OFF SWITCH ELECTRONIC 230-240V | M     |
| 12  | 8999711011        | 1          | SOCKET ( EU )                          |       |
| 13  | 8999711111        | 1          | POWER CORD ( EU )                      |       |
| 14  | 8999701211        | 1          | WIRE 1 X 150 220-240V                  |       |
| 15  |                   | 1          | O-RING                                 |       |
| 16  |                   | 1          | LABEL DUSTCLASS >M<                    | M     |
| 17  | 8999701311        | 5          | SCREW-SET 3.5x18                       |       |
| 18  | 8999701411        | 13         | SCREW-SET 5x18                         |       |
| 19  | 8999701511        | 1          | AIRGUIDE                               |       |
| 20  | 8999701611        | 1          | CLAMPINGPLATE                          |       |
| 21  | 8999701811        | 1          | STRAP FOR CABLE                        |       |
| 22  | 8999711911        | 1          | DISTRIBUTION STRIP                     |       |
| 23  | 8999752311        | 1          | PIEZO BUZZER                           | M     |
| 24  |                   | 1          | HOSE CLAMP D10                         | M     |
| 25  | 8999752511        | 1          | ELECTRONIC FLOW SENSOR                 | M     |
| 26  |                   | 1          | O-RING 4x1,5                           | M     |
| 27  | 8999702011        | 1          | CONTACT SPRING                         |       |
| 28  |                   | 1          | SOUND INSULATION OUTLET                |       |
| 29  | 8999702111        | 1          | SEALING ASSEMBLY                       |       |
| 30  | <b>8999723211</b> | 1          | MOTOR ASSAMBLY( 230V)                  |       |
| 31  | 8999702311        | 1          | BASEPLATE                              |       |
| 32  | 8999702411        | 1          | FLAP                                   |       |
| 33  | 8999602211        | 1          | SPRING                                 |       |
| 34  | 8999702611        | 1          | PLUG BASE PLATE BASIC                  |       |
| 35  |                   | 1          | SOUND INSULATION FRONT                 |       |
| 36  | 8999702811        | 2          | CONTAINER CLAMP                        |       |
| 37  | 8999702911        | 1          | GASKET FOR CONTAINER                   |       |
| 38  | 8999601411        | 1          | GASKET FOR FILTER                      |       |
| 39  | 8999703111        | 1          | DEFLECTOR                              |       |
| 40  | <b>8999600411</b> | 1          | FILTER                                 |       |
| 41  | 8999602511        | 1          | FILTER SUPPORT CAGE                    |       |
| 42  | 8999703411        | 1          | CONTAINER WITH FITTING                 |       |
| 43  | 8999703511        | 2          | CASTER                                 |       |
| 44  | 8999703611        | 1          | WHEEL AXLE                             |       |
| 45  | 8999703711        | 1          | SCREW 5x35                             |       |
| 46  | 8999601511        | 2          | WHEEL                                  |       |
| 47  | 8999703911        | 2          | RING                                   |       |
| 48  | 8999704011        | 2          | HUB CAP                                |       |
| 49  | 8999754911        | 1          | CONTAINER PLUG                         | M     |
| 50  | <b>8999723511</b> | 2          | CARBON BRUSHES (2pcs)                  |       |